



Guideline for optimal outcome with  
**LENTIS**<sup>®</sup> M<sub>plus</sub> and M<sub>plus</sub><sup>X</sup>

## 1. Preoperative patient selection

### General inclusion criterias

- Corneal astigmatism  $\leq 0.75$  dpt
- Decentred optical axis  $\leq 0.8$  mm center shift
- Bilateral implantation
- No strabismus
- Correct benefit rating with dry eye problems
- Expected postoperative visual acuity of  $\geq 0.63$  decimal (0.2 logMAR, 20/32 Snellen)
- Photopic pupil size  $\geq 3$ mm, mesopic pupil size  $\leq 6$  mm
- Wearer of contact lenses need to observe a 2 week waiting period
- Informed patient regarding the MIOL advantages and the possible MIOL limitations

### Choice of lens



LENTIS<sup>®</sup> Mplus

- Patient demand for excellent distance vision
- Recommended for hyperopic and emmetropic patients
- Fast neuro-adaptation



LENTIS<sup>®</sup> MplusX

- Patient demand for excellent near vision
- Recommended for myopic and emmetropic patients
- For mix and match strategy with LENTIS<sup>®</sup> Comfort

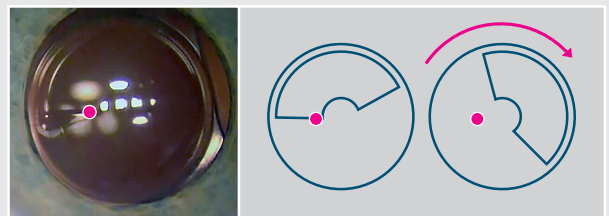
## 2. IOL calculation with optical biometry device

nominal	Haigis	HofferQ	Holl.1	SRK/T	SRK II
A=118.0	a0 = 0.95 a1 = 0.40 a2 = 0.10	pACD=5.21	sf=1.47	A=118.5	A=118.6

- Recommended Haigis for eye length  $\geq 22.0$  mm and HofferQ for eye length  $< 22.0$  mm
- Mplus target refraction: 0 to -0.25 dpt
- MplusX target refraction: +0.3 dpt

## 3. Intraoperative management

- Incision location at steep corneal axis to reduce residual corneal astigmatism
- Generally vertical positioning with near segment downwards, for night active patients upwards
- Positioning based on Purkinje reflex: Rotate the near segment away from the Purkinje reflex, showing the decentred optical axis and thus ensure the IOL transition zones don't cover the Purkinje reflex



## 4. Postoperative evaluation

- No use of auto-refractometers or aberometers for vision quality evaluation, measured outcomes with objective refractions often lead to faulty
- Subjective refraction is recommended with carefully use of minus because the patients pick this up with near foci
- Patient satisfaction will increase due to neuro-adaptation, including an adequate waiting time for perfect results

### Oculentis GmbH

Am Borsigturm 58  
13507 Berlin, Germany

Phone. +49 (0)30 / 43 09 55 0  
Fax. +49 (0)30 / 43 09 55 11

Email. info@oculentis.com

### Oculentis BV

Kollergang 9  
6961 LZ Eerbeek, the Netherlands

